

Resource Stability Initiatives to Assist with Student Persistence

September 15, 2023

Your success starts here.



OWENS
COMMUNITY COLLEGE

Pathway to Student Success

SUCCESS



WHAT PEOPLE THINK
IT LOOKS LIKE

SUCCESS



WHAT IT ACTUALLY
LOOKS LIKE



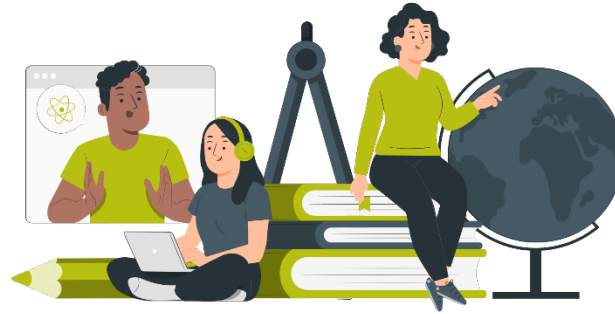
OWENS
COMMUNITY COLLEGE

VALUES Inclusive | Transformational | Intentional | Adaptive | Empowering

Challenges Affecting Student Retention



Academic Preparation



Academic Engagement



Social Engagement



Financial Concerns



External Obligations
(work/family)



Time Concerns

Rabourn et al., 2018



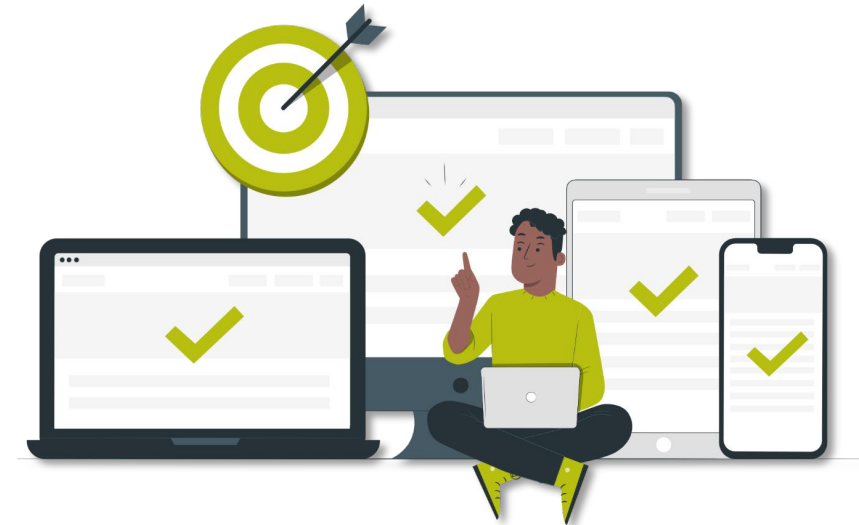
OWENS
COMMUNITY COLLEGE

What Can Institutions Do?

Find Resources

- Campus Life Activities
 - Campus Events
 - Student Organizations
- Mental Health Support
- Technology Support
- Educational Support
 - Integrate within Coursework

Renner & Skursha, 2022



Student Financial Wellness Survey Results

Understanding the connection between student finances and student success is essential to supporting the 21st century student.

While **60%** of students **USED PERSONAL SAVINGS** and **72%** **USED CURRENT WAGES TO PAY FOR SCHOOL,** **ONLY 5%** **ARE ABLE TO SOLELY RELY ON THIS SELF-HELP.**



58% of students would have **TROUBLE GETTING \$500 IN CASH OR CREDIT** in an emergency.



11% of students **WOULD NOT BE ABLE TO GET THAT AMOUNT FROM ANY RESOURCE.**

66% of students **WORRY ABOUT HAVING ENOUGH MONEY** to pay for school.



23% of students **RAN OUT OF MONEY 6 OR MORE TIMES** in the past year.

47% of students **REPORTED BEING HOUSING INSECURE.**



18% of students had **VERY LOW FOOD SECURITY.**



50% of students indicated **EXPERIENCING GENERALIZED ANXIETY DISORDER.**



The Center for Campus & Community Connections (CCCC)



Owens recognizes that reliable and consistent access to affordable food, housing, transportation, technology, familial care, and health care is a central condition for learning.

- Harvest Food Pantry
- Harvest Community Garden
- Career Closet
- Free Store
- Harvest Apiary



What is CCCC?

- Enhance retention through resource stability, community connections
- In-person and online appointments connect students to both on-/off-campus resources
- ALL campus community members are eligible!



Student Stories

Javon: 18-yr.-old who is estranged from his family and rides the shuttle from the shelter to campus to take courses. He is approved for tuition support, but no other living expenses such as food or housing.



Danielle: 65-yr.-old survivor of cancer who lost her spouse and son, and was left financially destitute. She came to Owens to rediscover a sense of purpose and is now pursuing a social work degree so she can help others.



OWENS
COMMUNITY COLLEGE

Commitment to Student Success



(c) 2007 Lisa Benson, Distributed by The Washington Post Writers Group. Reprinted with Permission.



VALUES Inclusive | Transformational | Intentional | Adaptive | Empowering

References

- Rabourn, K., BrckaLorenz, A., & Shoup, R. (2018). Reimagining student engagement: How nontraditional adult learners engage in traditional postsecondary environments. *Journal of Continuing Higher Education, 66* (1).
- Renner, B. J. & Skursha, E., (2022). Student support for adult students to overcome barriers and improve persistence. *The Journal of Continuing Higher Education*, DOI:10.1080/07377363.2022.2065435.

Contact Info

Dr. Blake J. Renner

- Vice President, Enrollment Management and Student Affairs
- Blake_Renner@owens.edu

Krista L. Kiessling

- Director, Campus and Community Connections
- Krista_Kiessling@owens.edu



OWENS
COMMUNITY COLLEGE