

OACC Conference –
Employment Outcomes & Program Review
July 24, 2024

Marion
Technical College

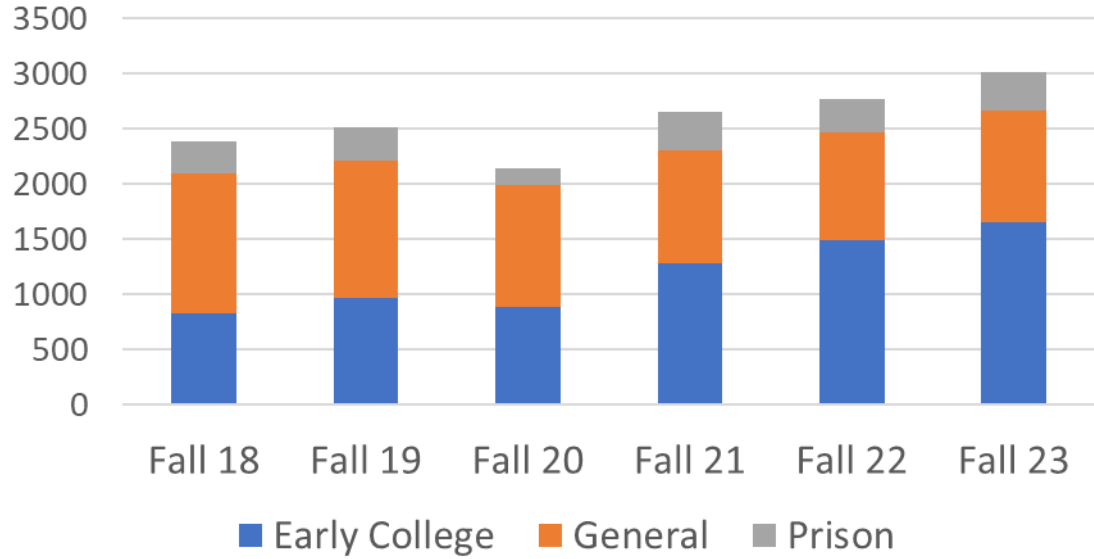
Marion

Technical College

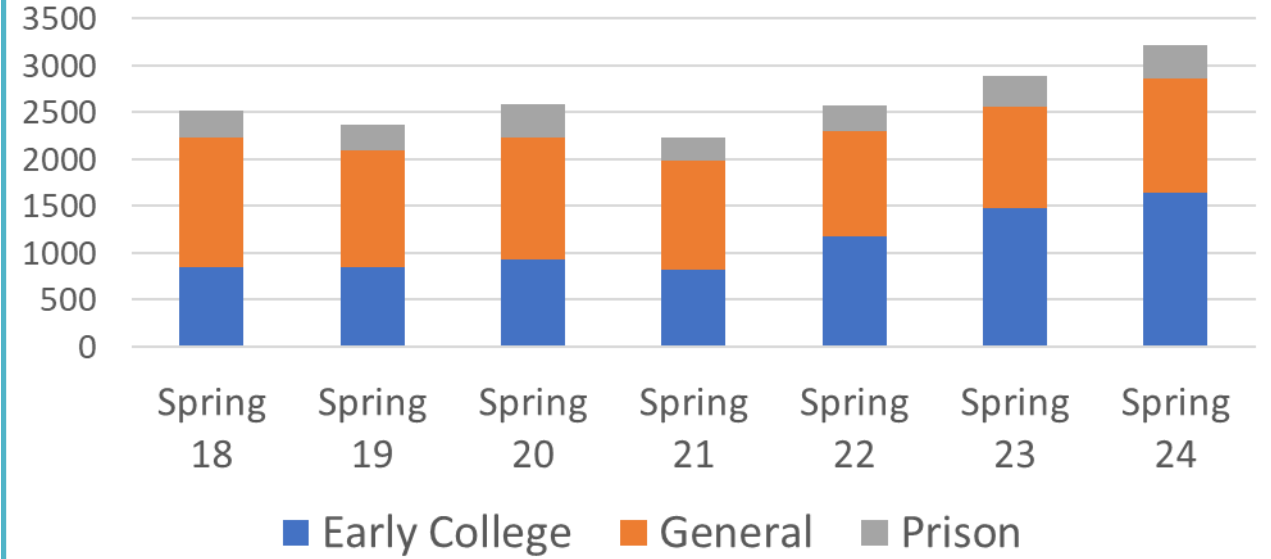


- Founded in 1970
- Primarily Technical Programs
 - Health (OTA, PTA, MedLab, RAD, DMS, Surg Tech)
 - Nursing – ADN
 - Nursing – RN->BSN
 - Engineering
 - Business Management
 - Social Work/Addictions Studies
 - Criminal Justice
 - IT / Cyber
- Served ~60,000 students
- Just over 12,000 graduates

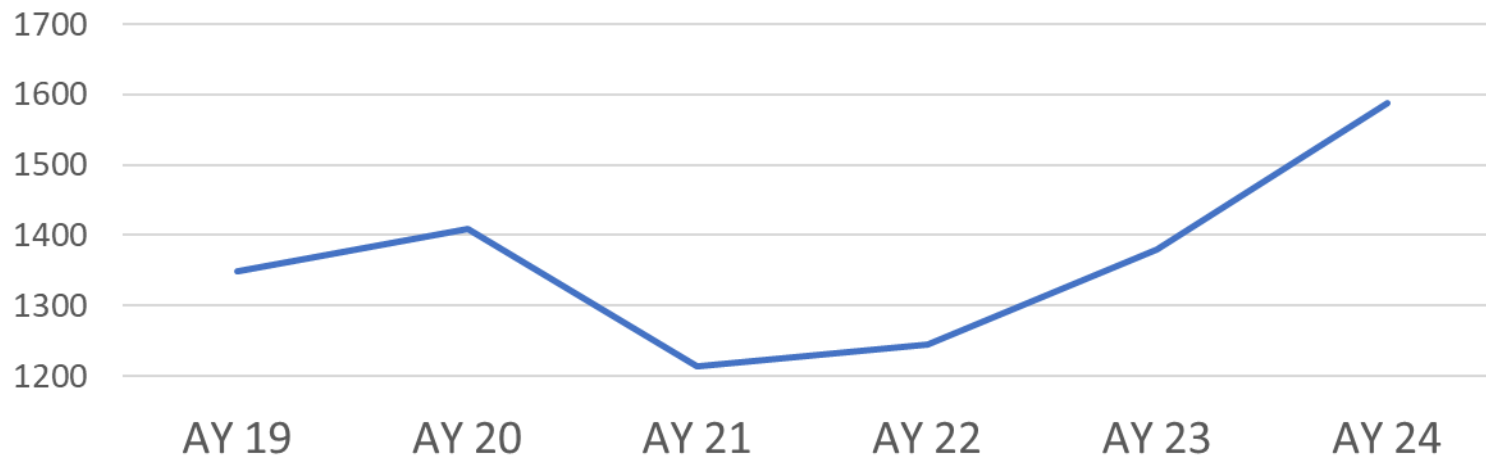
Fall Headcount



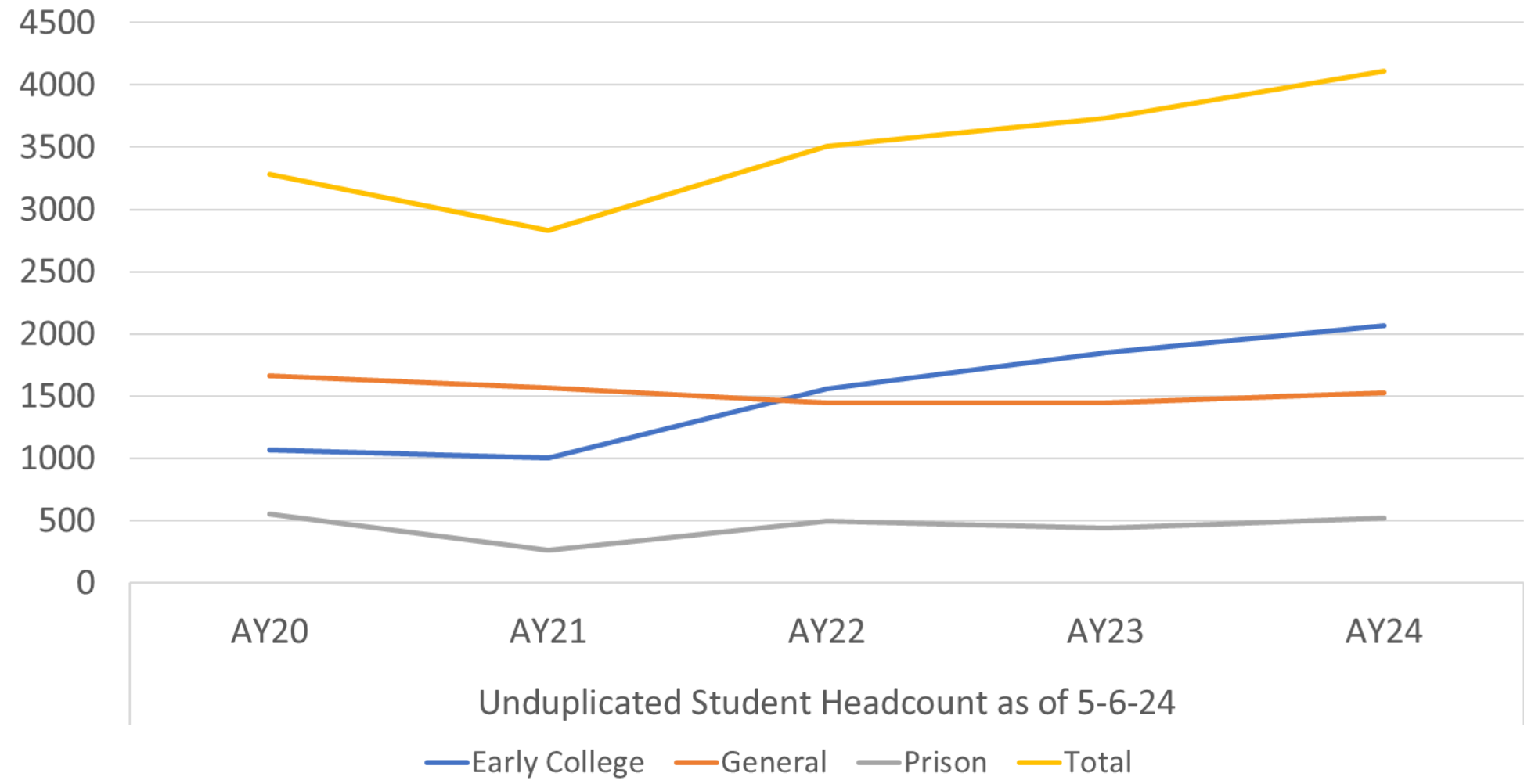
Spring Headcount



FTE History



Unduplicated Credit Student Headcount



OACC Conference

Employment Outcomes & Program Review

July 2024

- Are our certificates and degrees a good investment for students?
- How much do our graduates earn?
- Where do our graduates work?
- How can we use wage data as a part of program review?
- What is the employment outlook for graduates from our programs?
- What resources are available to help answer these questions?

Data Submitted to ODJFS

- Submitted all graduates since 1970 and attendees since 2015 who did not graduate.
- Wage matches were found for 9,709 attended but not graduated (out of 14,012 submitted – 60%)
 - Of the 14,012 non-graduates submitted, matches were found for:
 - 4,700 Early College Students
 - 896 former prison students
 - 4,113 General Students
 - 1,545 of these students were enrolled in fall 23
 - 667 Early College Students
 - 40 former prison students
 - 838 general students

Data Submitted to ODJFS

Wage matches were found for 7,392 graduates (out of 11,824 graduates since MTC started in 1971– 63%)

Highest Degree / Records Matched*				Graduates Submitted	% Matched
Grad Academic Year	Certificate	Degree	Total		
2014-15	12	200	212	292	73%
2016-17	15	180	195	304	64%
2018-19	43	191	234	324	72%
2020-21	51	178	229	319	72%
Total	121	749	870	1239	70%

*Worked at least 39 weeks in calendar year 2022

What We Know About MTC Graduates

- MTC graduates since 1971 earned a median wage of \$64,912 in calendar year 2022 (99% of KPI)
 - MIT Living Wage for a family of 2 adults, 1 child, 1 adult working is \$65,685
- Engineering Grads since 1981 earned \$83,114
- Health Grads since 1981 earned \$62,719
- Technical Program Grads since 1981 earned \$62,202

What We Know About MTC Graduates

- Earning Gaps Exist among MTC Graduates.
 - Students who received a **Pell award** earn **11% less** than non-Pell students.
 - Minority graduates earn 1% less than non-minority graduates.
 - Pell and Minority students earn 7% less than non-Pell, non-minority graduates.
 - Female graduates earn 18% less than male graduates.
- 63% of MTC grads since 1971 worked in Ohio in 2022.
- ~50% of MTC grads work for an employer based in Central Ohio.
- Graduates earn substantially more than students who attended but did not earn a credential. Since 2015, for the calendar year 2022:
 - MTC students who earned an associate degree earned an average of \$55,385.
 - MTC students who earned a one-year certificate earned an average of \$41,851
 - Students who attended but did not graduate earned an average of \$40,083.

What We Know About MTC Graduates

Average Earnings by Highest Degree Attained

Grad Academic Year	Certificate	Degree	Overall
2014-15	\$41,167	\$57,488	\$56,564
2016-17	\$40,773	\$61,250	\$59,675
2018-19	\$60,448	\$56,474	\$57,204
2020-21	\$70,400	\$51,733	\$55,890
Total	\$60,291	\$56,766	\$57,256

*Worked at least 39 weeks in calendar year 2022

What We Know About MTC Graduates

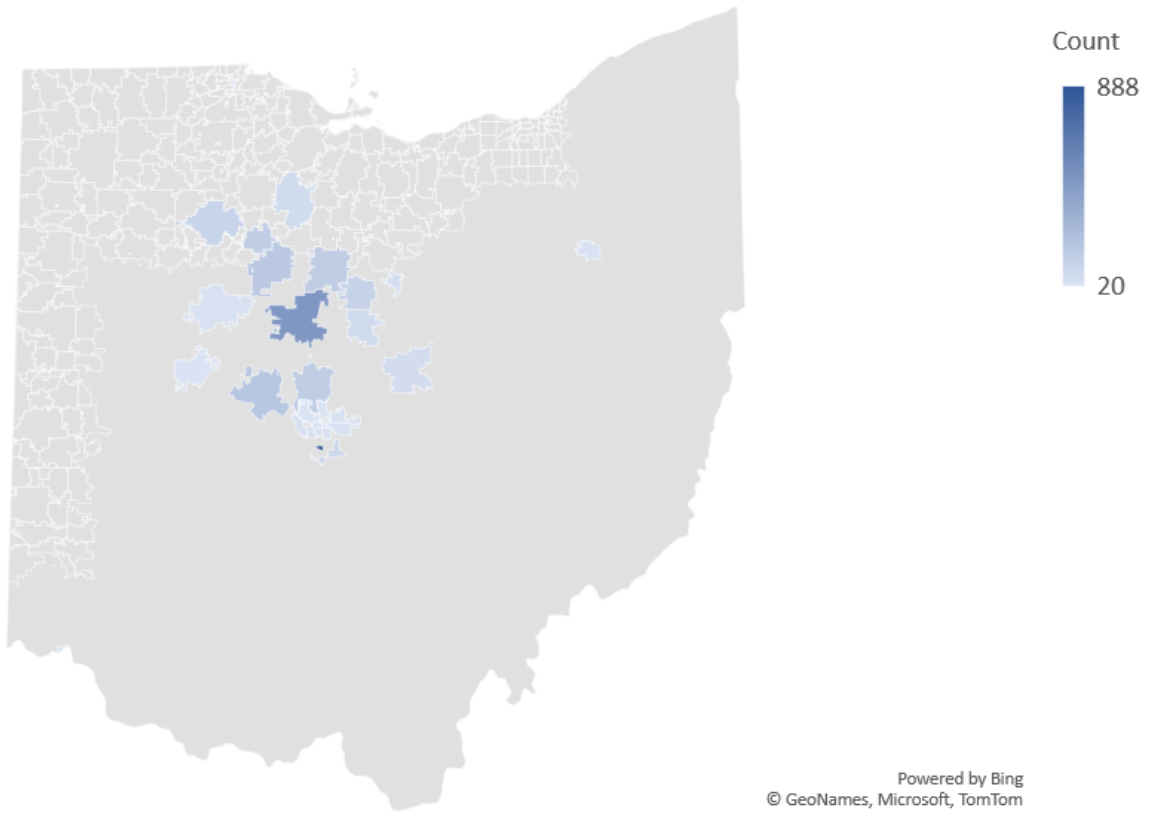
Median Earnings by Highest Degree Attained

Grad Academic Year	Certificate	Degree	Overall
2014-15	\$40,046	\$53,879	\$53,344
2016-17	\$39,717	\$53,715	\$53,248
2018-19	\$53,635	\$52,637	\$53,187
2020-21	\$75,632	\$50,944	\$53,596
Total	\$53,344	\$53,371	\$53,373

*Worked at least 39 weeks in calendar year 2022

What We Know About Employers of MTC Graduates

Top Employer Locations of MTC Graduates



- **8,507** unique employers with headquarters in 50 states.
- **77%** of employers based in Ohio
- **80%** of 2022 annual wages paid to MTC graduates by Ohio-based employers

Wage Data and Program Review: Med Assisting

Medical Assisting- 1420 - Program Review			
	2020-21	2021-22	2022-23
Total Revenue (tuition and estimated SSI)	\$77,649	\$38,006	\$46,837
Instructional and Departmental Direct Costs	\$140,708	\$137,767	\$145,461
Gross Contribution to Overhead	-\$63,059	-\$99,761	-\$98,624
Overhead share (based on % of credit hours taken in department courses)	-\$18,561	-\$13,492	-\$17,291
Estimated Gross Revenue from credit hours in other programs	\$48,284	\$67,412	\$72,426
Student FTE (Credit hours / 30)	5	2	3
Graduate Average Wage in most recent calendar year	\$26,518	\$39,083	\$39,462

ODJFS Wage Match

1. Set up Data Sharing Agreement
2. Submit List of student SSNs
3. Receive back text file from ODJFS
4. Format file for interpretation

Information Included	Limitations
Wages for each of the prior 6 quarters	Ohio only
Weeks worked for each of the prior 6 quarters	No occupation information
NAICS Code for Industry	No hourly information
SSN – enables cross-ref to internal data system	Excludes self-employed, military, federal
Employer Name, Address	Reporting restrictions
	“Manual” data summaries

Post Secondary Employment Outcomes (PSEO)

[Access the Website –no DSA needed](#)

Experimental Tabulations by US Census Bureau

Covers 95% of Private Sector Jobs

Information Included	Limitations
Shows the wage progression 1, 5, 10 years after graduation	Aggregate only – no student unit record data
Easy to use dashboards	Private Sector Only
Cohort Based	No ability to distinguish between Pell, Ethnicity, etc.
Employment outside Ohio is included	No specific employer information
“Flow” – shows connection between Instructional Program (CIP) and Industry (NAICS)	Includes only those who worked at least 3 quarters at a job paying more than minimum wage

PSEO (Post Secondary Employment Outcomes)

Post-Secondary Employment Outcomes Explorer

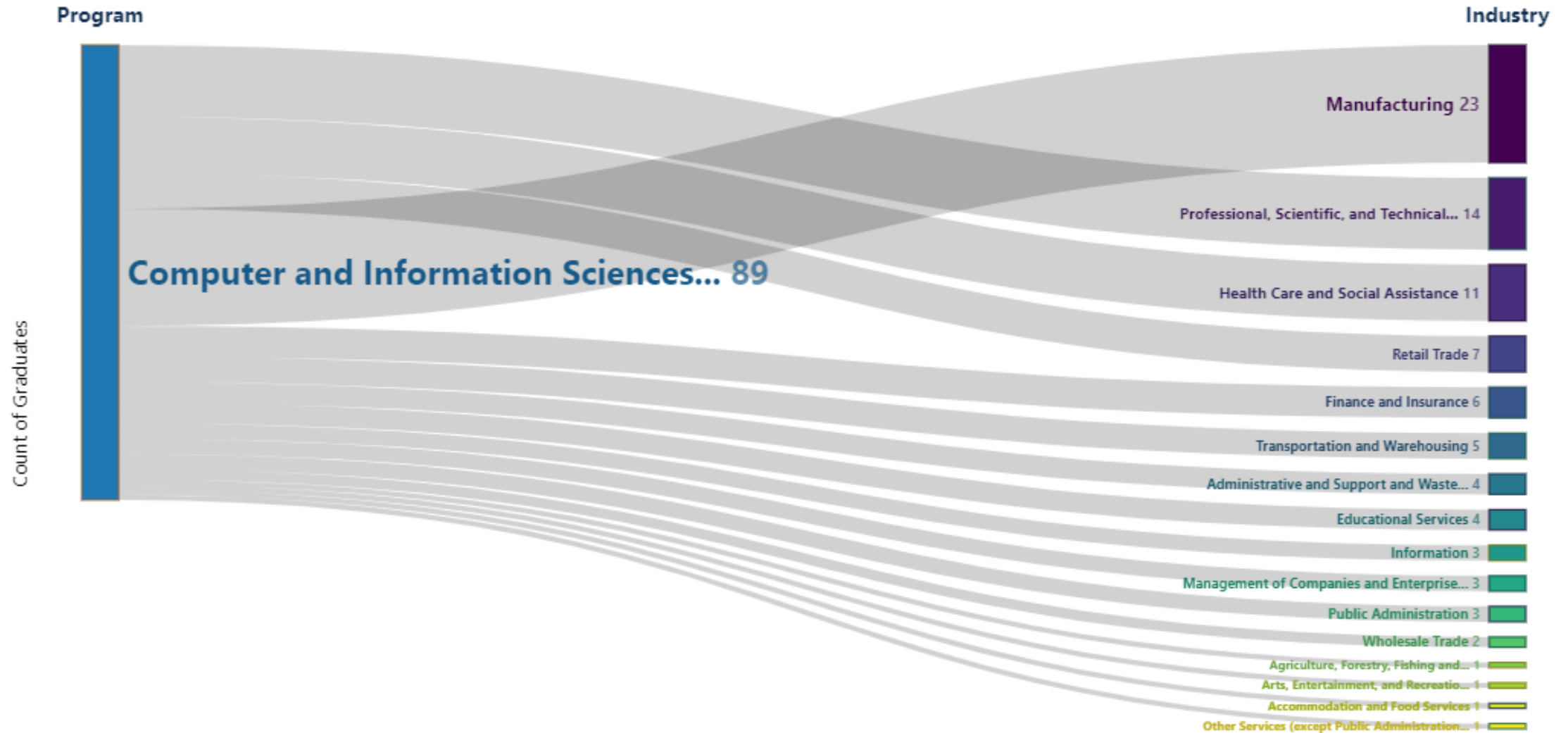
[What is PSEO?](#)

[Download Data](#)

[Email Us](#)

[Tutorial](#)

[Help](#)



Resources

- ODJFS Wage Match
 - Terry Lee Adams – Terryleeadams@jfs.ohio.gov
- Post-Secondary Employment Outcomes
 - https://lehd.ces.census.gov/data/pseo_experimental.html
- For employment projections

Ohio Labor Market Information

 Lightcast

Marion
Technical College

Summary

- Using the ODJFS Wage Match provides specific information about graduates working in Ohio.
- It is important to understand and disclose the Wage Match limitations.
- The data is actual data, not self-reported or estimated data from student surveys.
- Wage match data is one element of a comprehensive program review.
- Confidentiality is a key factor in the ODJFS Wage Match agreement.

Thanks for Attending!



Dr. Bob Haas
Provost, Chief Strategy Officer
Marion Technical College

[740-725-4078](tel:740-725-4078)

haasr@mtc.edu